

Rota-Screw F Series

3.7~55 kW (5~75 hp)
7~13 Bar (102~218 psi)

ECONOMICAL , INTELLIGENT , SAFE , POWERFUL



**ROTORCOMP
VERDICHTER**

Incorporating 60 years of experience in compressor production and latest CAD & CAM design systems to maintain state-of-the-art performance standards.

IWATECH

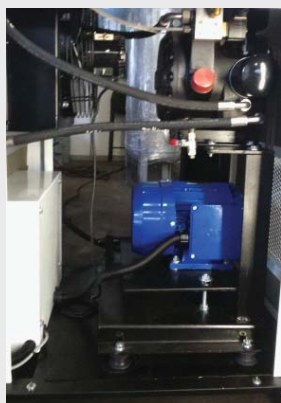
SERVICE & SALES (M) Sdn. Bhd.
No. 8, Jalan Raja Arfah 1, Segambut
51200 Kuala Lumpur, Malaysia.
Tel : +603-6242 8008
Fax : +603-6243 7222
Email : my@iwatech.com

IWATECH

SERVICE & SALES (S) Pte. Ltd.
2, Kian Teck Drive, Jurong
628819 Singapore.
Tel : +65-62682211
Fax : +65-62682191
Email : sg@iwatech.com

www.iwatech.com

MODEL	MOTOR		FAD (m3/mn)			STARTER	SOUND LEVEL dBA at 1.5 m	OIL QUANTITY litres (L)	WEIGHT kg	OUTLET CONNECTION inches	DIMENSIONS L X W X H (meter)
	KW	HP	07 Bar	10 Bar	13 Bar						
NKP 275 F	7.5	10	1.19	0.99	0.82	DOL	65	4	190	1/2 BSP	0.83 x 0.70 x 1.13
NKP 311 F	11	15	1.75	1.50	1.20	S/D	67	5.5	320	3/4 BSP	0.91 x 0.89 x 1.25
NKP 315 F	15	20	2.16	1.90	1.61	S/D	69	5.5	330	3/4 BSP	0.91 x 0.89 x 1.25
NKP 622 F	22	30	3.37	3.10	2.70	S/D	69	8	500	3/4 BSP	0.89 x 1.07 x 1.37
NKP 937 F	37	50	6.26	5.70	5.10	S/D	72	22	850	1 1/2 BSP	1.55 x 0.97 x 1.63
NKP 945 F	45	60	7.46	6.42	5.59	S/D	74	22	960	1 1/2 BSP	1.55 x 0.97 x 1.63
NKP 955 F	55	75	9.00	7.71	6.78	ATS	75	36	1200	2 BSP	1.80 x 1.23 x 1.80



The **EVO series** incorporated with **ROTORCOMP** EVO Series Compact Modules, Intelligent Electronic Controller and specially design Silencing Canopy produce the utmost efficient and reliable Air Compressor for all industries.

Advanced Screw Compressor Technology

The major components, such as the compressor compact unit are imported from ROTORCOMP VERDICHTER, GmbH Germany. A subsidiary company of the Bauer Compressor Group and a renowned manufacturer of screw compressor blocks.

Ready

By connecting electric cable and Air Piping, Compressors are ready for operation.

Full safety features

Safety Valve - Installed directly onto the Compact Module
E-Stop Button and Separator Pressure Gauge visibly mounted on Display Panel
Intelligent Controller with precision monitoring of compressor.

Compact in design

Compact design eliminates unwanted pipe work and potential Oil leaks.

Ease of Maintenance

Dom Separator and Oil Filter Cartridge can be easily removed with a wrench.



UNIVERSAL INTELLIGENT CONTROLLER



Display Panel
On Button
Stop Button

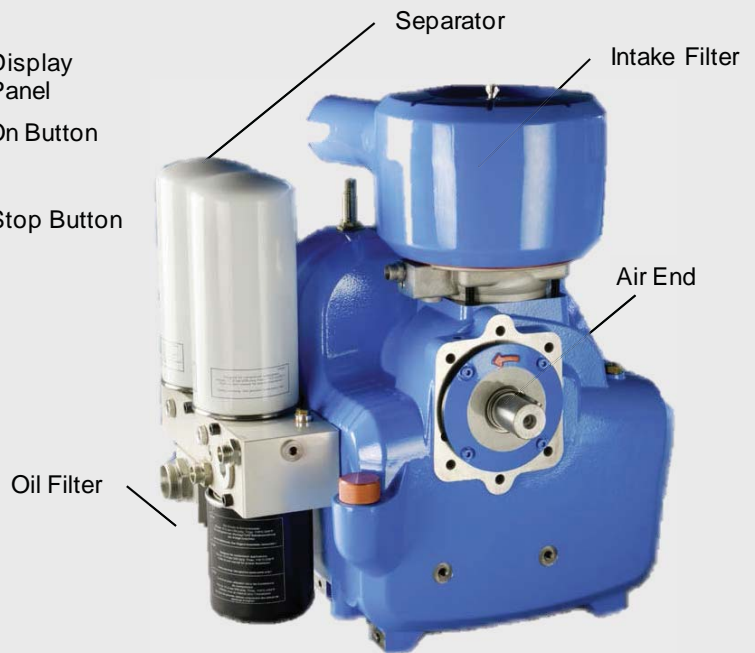


Temperature Sensor



Pressure Sensor

EVO COMPACT AIR MODULE



Separator
Intake Filter
Air End
Oil Filter

UNIVERSAL INTELLIGENT CONTROLLER

1 UIC

is a system managing the compressor's operation intensively, saving energy and preventing problems in advance with alarming system. sampling rate is about 10 times faster than the existing controllers .

UIC is the BEST for operation of Screw Air Compressors.

2 BIG SIZE GRAPHIC LCD

for user's easy operation and recognition.

3 BLACK BOX

store a maximum of 160 events on running log , so it is easy for preventative maintenance and trouble-shooting , Additionally , it is possible to verify the operation data at site when trip occur, so it is helpful for users to know the reason of trouble in real-time.

4 STATUS DISPLAY

A comprehensive display function for operation status (e.g. Ready, Load, Auto Stop, Delay and Shut Down) and **Fault** (Alarm and Trip), so users can recognize the status of compressor at a glance.

5 REAL TIME CLOCK

Automatic calculation and notice function for preventative maintenance and.Automation of economical operation by embedded weekly timer

EVO COMPACT AIR MODULE

1 EVO Series

oil-injected rotary compressor has been optimized with regard to safety & compactness .Six components are integrated into a module:- Air Filter, Intake Control, Air End, Compressed Air/Oil tank , Separator Cartridge and oil filter.

2 Simplified Service and Maintenance

Compact Encapsulated Air End design integrated all components into the housing eliminates unwanted pipe work and potential oil leaks.

3 Less Maintenance Parts

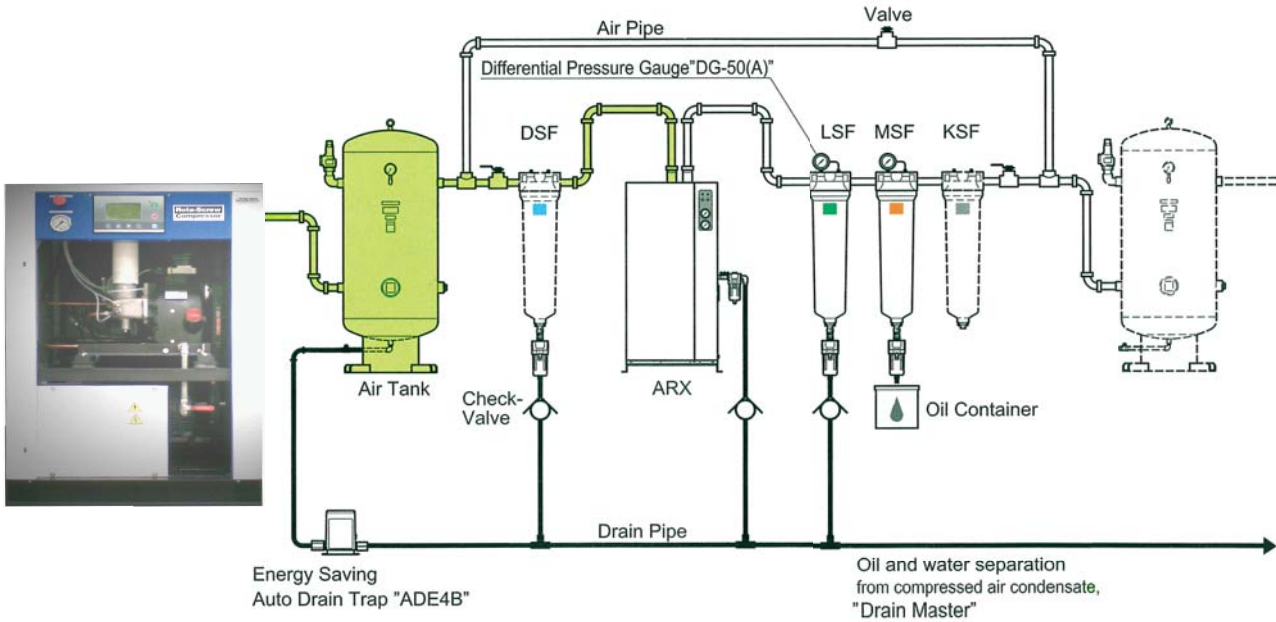
Integration of individual components into a Module has resulted in less wear and tear parts.
Less spare parts and service time resulting in cost saving.

4 High Operational Reliability

The Main Housing is made of Solid Cast Iron resulting in Low Noise and Vibration.

5 Simplified and Safe Handling

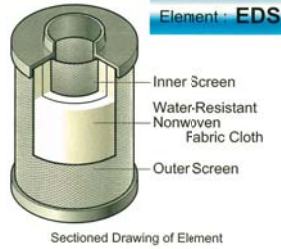
The wear -free ROLLING PROFIL© and the generously dimensioned sub-assemblies . guarantee a Long Service Life and High Technical Standard.



Advanced Technology Packed Clean Air Filter, ORION "AL-Filter" series

Drain Filter DSF-AL

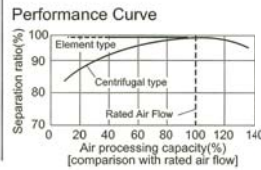
Location*1 Before ARX



Element: EDS

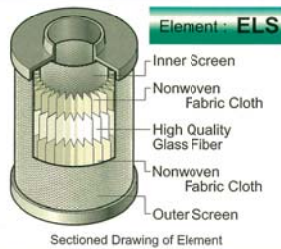
Water droplet and solid particulate (5µm) removal
No water drop in filtration performance
Low pressure loss (0.005MPa or less) as pre-Filter
Float operated auto drain trap installed

LOW P-loss
LOSS 0.005MPa



Line Filter LSF-AL

Location*1 After ARX

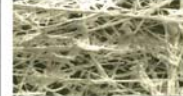


Element: ELS

Solid particulate (1µm, 99.999%) removal
High quality glass fiber element installed(ELS)
Float operated auto drain trap installed
Precision different pressure gauge "DG-50(A)" installed (LSF400AL and bigger model)

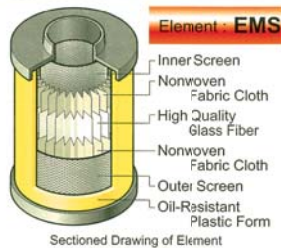
LOW P-loss
LOSS 0.005MPa (Initial)

High Quality Glass Fiber



Mist Filter MSF-AL

Location*1 After LSF-AL



Element: EMS

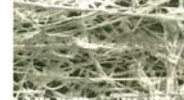
Oil mist (0.01wt ppm) and fine solid particulate (0.01µm, 99.999%) removal
Newly developed element installed(EMS)
Float operated auto drain trap installed
Precision different pressure gauge "DG-50(A)" installed (MSF400AL and bigger model)

LOW P-loss
LOSS 0.01 ~ 0.02MPa

Oil-Resistant Plastic Form

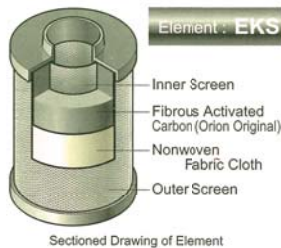


High Quality Glass Fiber



Carbon Filter KSF-AL

Location*1 After MSF-AL



Element: EKS

Removes Odor (0.003wt ppm)
Newly developed element "Fibrous Activated Carbon" installed(EKS)
Great reduction in amount of loose carbon as compared with previous filters

LOW P-loss
LOSS 0.009MPa

Output Oil Concentration(wt ppm)

